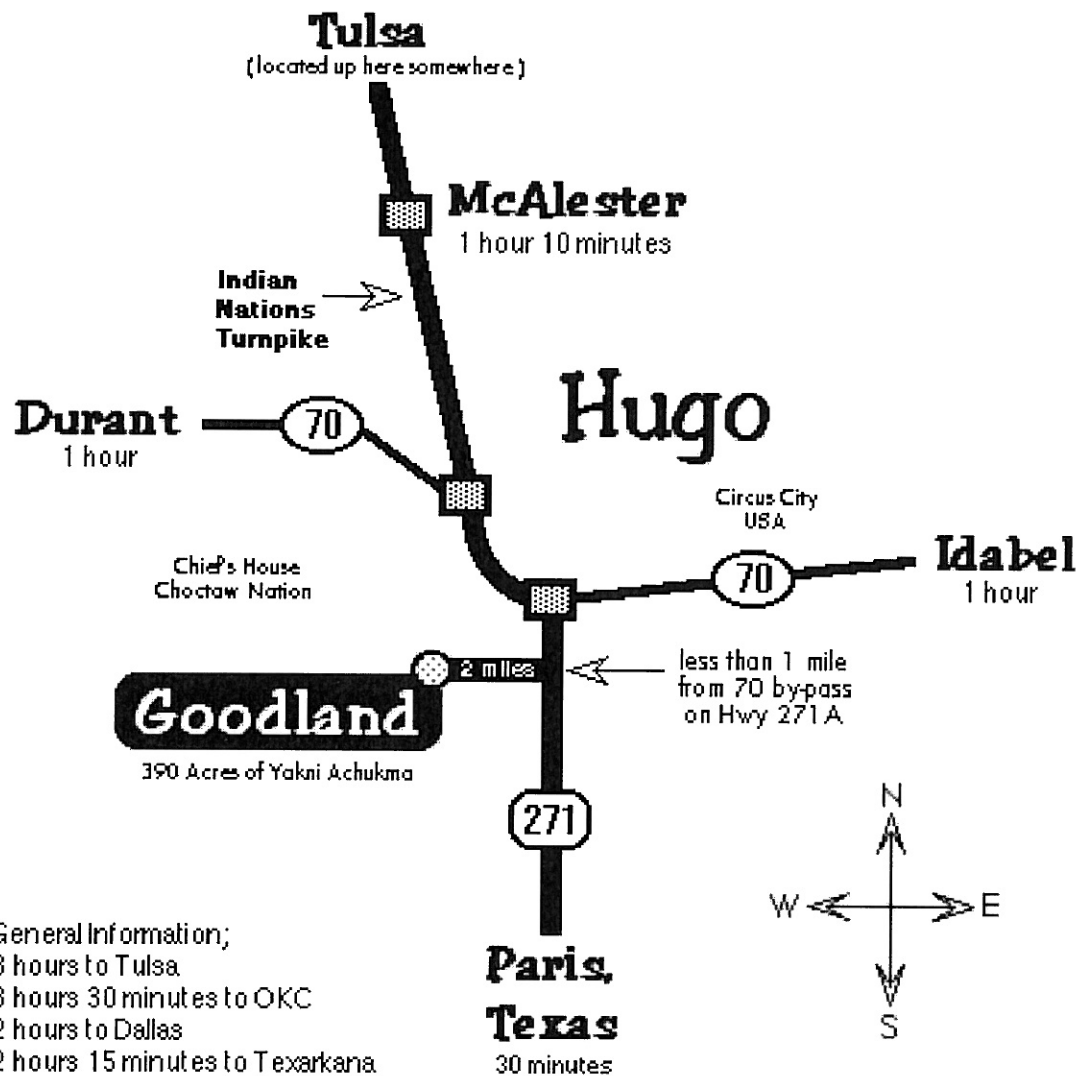


Where in the world is Goodland Oklahoma?



General Information;
 3 hours to Tulsa
 3 hours 30 minutes to OKC
 2 hours to Dallas
 2 hours 15 minutes to Texarkana

After this fantastic map, if you still need instructions then ...

If Traveling South on the Turnpike

... go to the end of the turnpike ... it will miraculously turn into Hwy 70 bypass
 ...go until you come to the exit for Paris, Texas (@ 2 miles) ...



...take the exit and go south for 9/10ths of a mile ...take the exit on your right for Goodland School (Hwy 271A) ...go for 2 miles and look to your left for the road into our campus ... see you there!

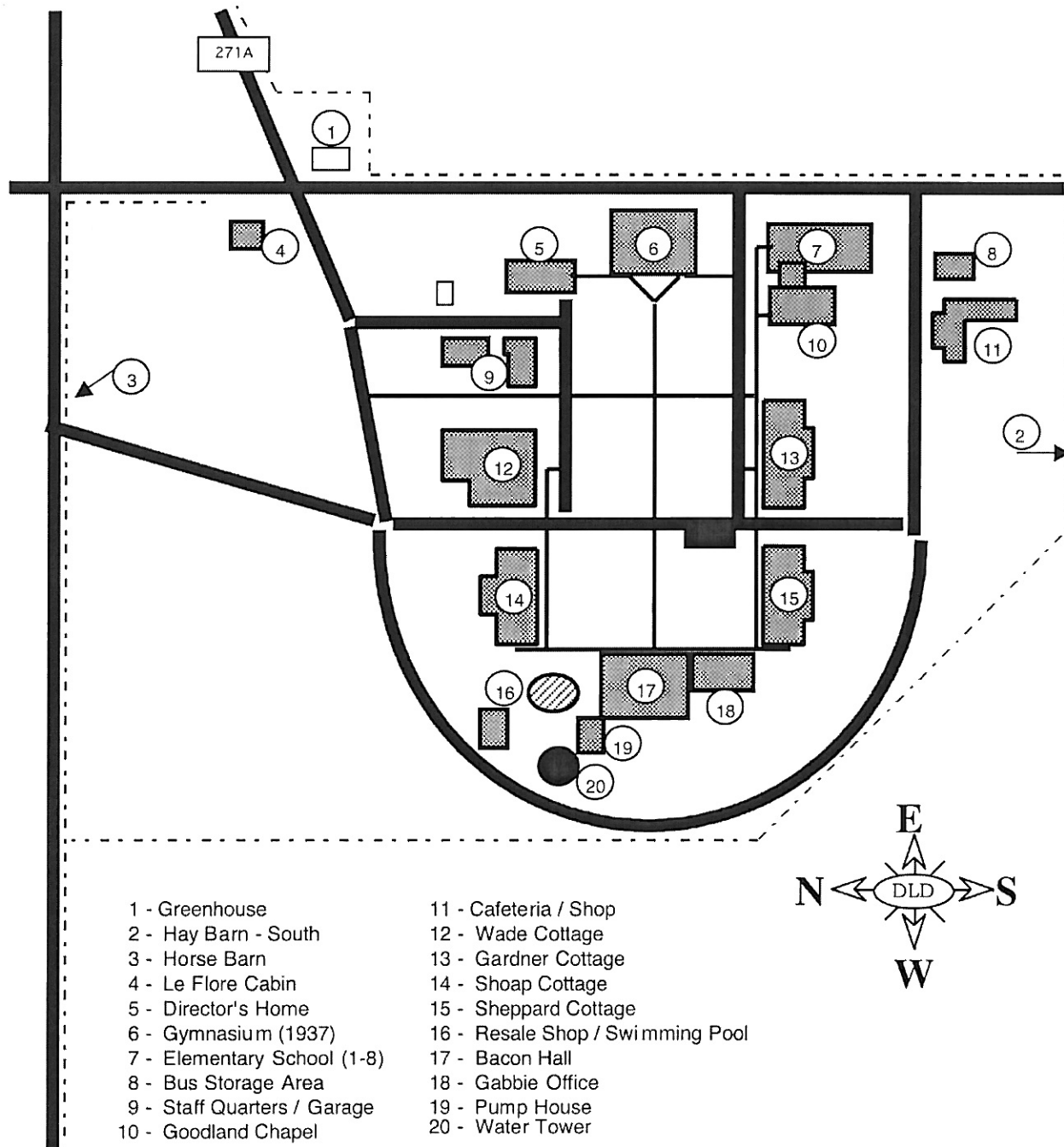


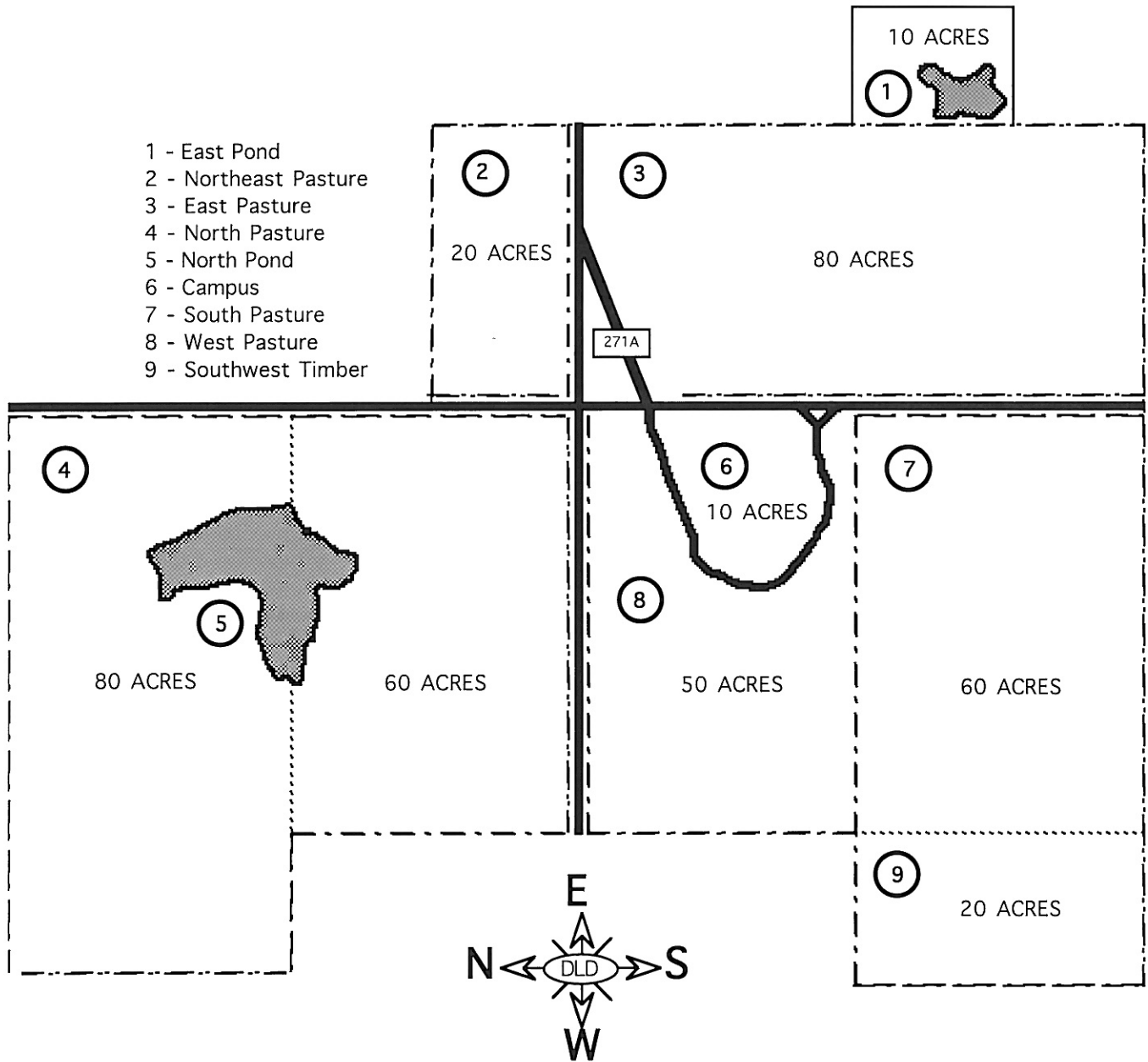
If Traveling East on Hwy 70 ...

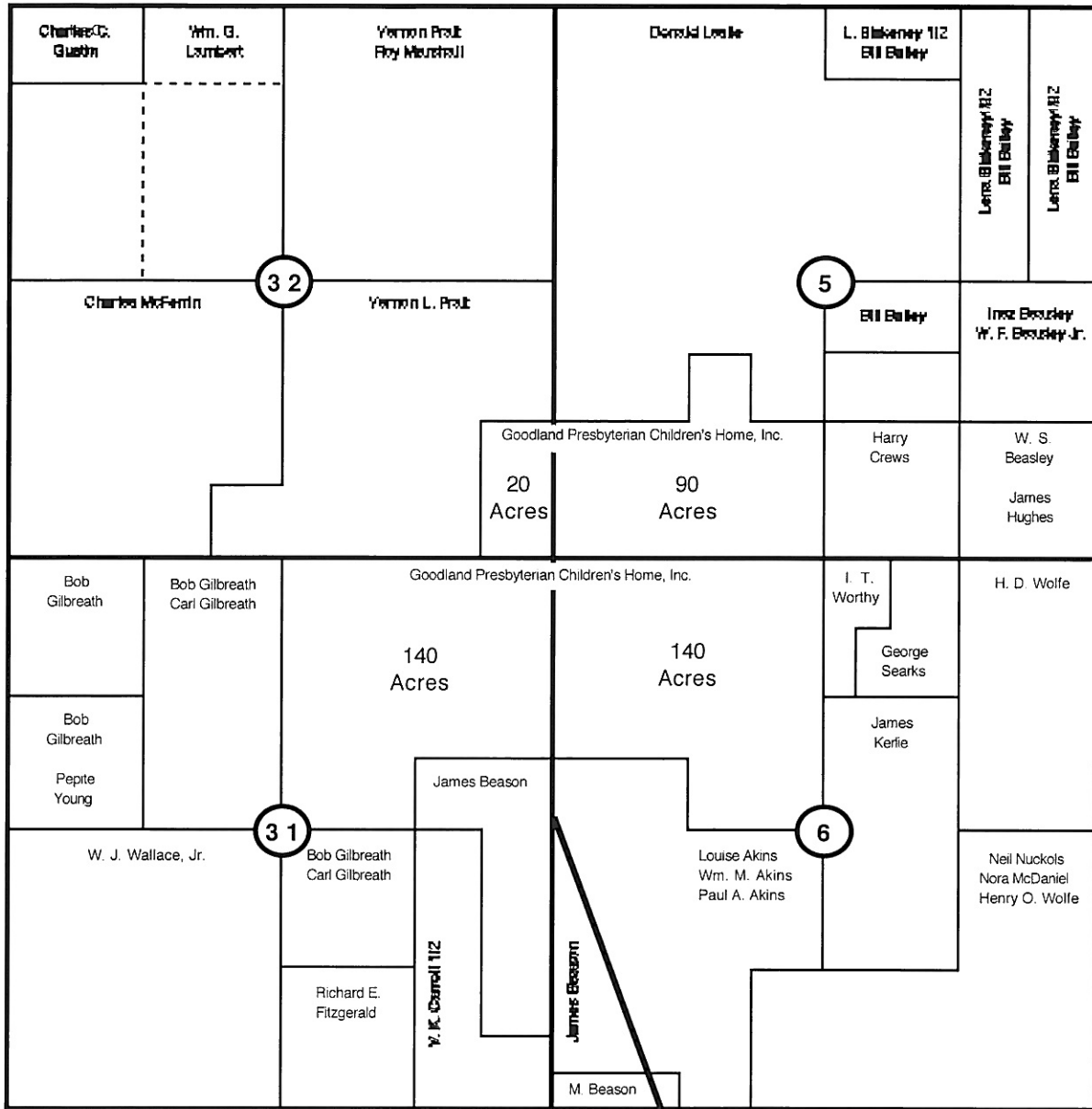
go until you get to the exit for Hwy 70 bypass to the south (Paris) ...stay on the bypass until you come to the exit for Paris, Texas (@ 2 miles) ...



If Traveling West on Hwy 70 ... go until you come to the exit for Paris, Texas ...







Choctaw County : Township - 6S Range - 17E | Choctaw County : Township - 7S Range - 17E

